

Amsterdam

# Menarhof 20

**CODICE OGGETTO: NL24185498**



**PREZZO D'ACQUISTO: 1.075.000 EUR • SUPERFICIE NETTA: ca. 162 m<sup>2</sup> • VANI: 5**

**CODICE OGGETTO: NL24185498 - 1043 EV Amsterdam**

- A colpo d'occhio
- La proprietà
- Dati energetici
- Una prima impressione
- Dettagli dei servizi
- Tutto sulla posizione
- Partner di contatto

CODICE OGGETTO: NL24185498 - 1043 EV Amsterdam

## A colpo d'occhio

CODICE OGGETTO	NL24185498
Superficie netta	ca. 162 m <sup>2</sup>
Vani	5
Camere da letto	3
Bagni	1
Anno di costruzione	2023

Prezzo d'acquisto	1.075.000 EUR
Appartamento	Appartamento

CODICE OGGETTO: NL24185498 - 1043 EV Amsterdam

## Dati energetici

Classe Energetica	Al momento della creazione del documento la certificazione energetica non era ancora disponibile.	Classe di efficienza energetica	A+
-------------------	---	---------------------------------	----



CODICE OGGETTO: NL24185498 - 1043 EV Amsterdam

## La proprietà



CODICE OGGETTO: NL24185498 - 1043 EV Amsterdam

## La proprietà





CODICE OGGETTO: NL24185498 - 1043 EV Amsterdam

## La proprietà



CODICE OGGETTO: NL24185498 - 1043 EV Amsterdam

## La proprietà



CODICE OGGETTO: NL24185498 - 1043 EV Amsterdam

## La proprietà



CODICE OGGETTO: NL24185498 - 1043 EV Amsterdam

## La proprietà





CODICE OGGETTO: NL24185498 - 1043 EV Amsterdam

## La proprietà



CODICE OGGETTO: NL24185498 - 1043 EV Amsterdam

## La proprietà





CODICE OGGETTO: NL24185498 - 1043 EV Amsterdam

## La proprietà



CODICE OGGETTO: NL24185498 - 1043 EV Amsterdam

## La proprietà



CODICE OGGETTO: NL24185498 - 1043 EV Amsterdam

## La proprietà





CODICE OGGETTO: NL24185498 - 1043 EV Amsterdam

## La proprietà



CODICE OGGETTO: NL24185498 - 1043 EV Amsterdam

## La proprietà





CODICE OGGETTO: NL24185498 - 1043 EV Amsterdam

## La proprietà



CODICE OGGETTO: NL24185498 - 1043 EV Amsterdam

## La proprietà





CODICE OGGETTO: NL24185498 - 1043 EV Amsterdam

## La proprietà





CODICE OGGETTO: NL24185498 - 1043 EV Amsterdam

## La proprietà



CODICE OGGETTO: NL24185498 - 1043 EV Amsterdam

## La proprietà



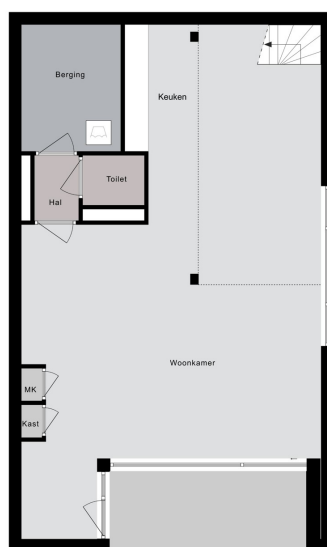
CODICE OGGETTO: NL24185498 - 1043 EV Amsterdam

## La proprietà



CODICE OGGETTO: NL24185498 - 1043 EV Amsterdam

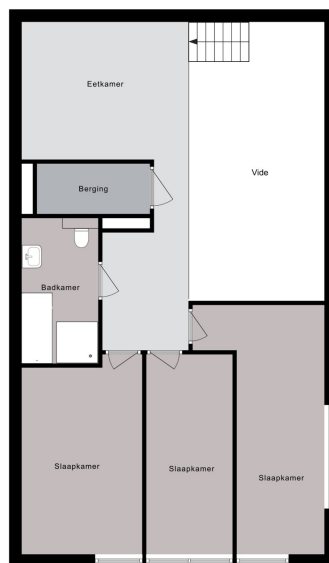
## La proprietà



Begane grond

CODICE OGGETTO: NL24185498 - 1043 EV Amsterdam

## La proprietà



1e verdieping



CODICE OGGETTO: NL24185498 - 1043 EV Amsterdam

## La proprietà



**CODICE OGGETTO: NL24185498 - 1043 EV Amsterdam**

## Una prima impressione

VERTICAL CENTER IS COMPLETED! Great living in a sustainable city house completely surrounded by greenery in an up-and-coming neighborhood with a perpetual leasehold that has already been bought off. This beautiful new-build apartment (162 m2) spread over two floors is part of the sustainable new-build project VERTICAL and has a living floor with open kitchen, 3 bedrooms, bathroom, separate toilet, storage room and terrace (approx. 10 m2) and is located on a stone's throw from Sloterdijk Station and is situated on the Menarahof, a sunny, quiet and green square. Builder Heijmans: "We offer our target groups maximum living comfort in a highly urban environment. The architecture is distinctive, partly due to the different signatures of the four architects." The green facades and roofs, with nest boxes and water storage function, stimulate the flora and fauna in the area." The 'vertical gardens' that are created as a result are part of the so-called Bretten cloth, an ecological zone as a connection between the Lange Bretten and the Westerpark. "The green is being pulled into the city."

**CODICE OGGETTO: NL24185498 - 1043 EV Amsterdam**

## Dettagli dei servizi

The apartment is located in the middle and lowest tower, Vertical Center, divided over the ground floor and the mezzanine floor.

Ground floor: Direct access to the spacious living room. The living room is a playful space with a difference in height, open kitchen and a spacious adjoining terrace. At the rear there is a hall with separate toilet with fountain, an internal storage room with washing machine connection and a staircase to the sleeping floor.

Mezzanine floor: Spacious landing with access to all areas. The three bedrooms are located at the front, in the middle the storage room and the bathroom with toilet, bath, shower and sink.



**CODICE OGGETTO: NL24185498 - 1043 EV Amsterdam**

## Tutto sulla posizione

The area around Sloterdijk Station in Amsterdam-West is rapidly transforming from a location with a monoculture to a mixed living and working area. It's a real hub location. Nice to stay in, easy to go out. Train, bus and metro station Amsterdam-Sloterdijk is within walking distance. Within fifteen minutes you are at Schiphol Airport or the center of Amsterdam, with ten minutes by bike you are in Westerpark and the sea is half an hour away for a day at the beach.

**CODICE OGGETTO: NL24185498 - 1043 EV Amsterdam**

## Partner di contatto

Per ulteriori informazioni, si prega di contattare la persona di riferimento:

Joan Dik, Marie Christine Lodewijk & Elisabeth van Zijverden

---

De Lairesestraat 51 Amsterdam  
E-Mail: [info@von-poll.nl](mailto:info@von-poll.nl)

*To Disclaimer of von Poll Immobilien GmbH*

---

[www.von-poll.com](http://www.von-poll.com)