

Amsterdam

# Ceramiquelaan 319

VP azonosító: NL24185509



VÉTELÁR: 1.150.000 EUR • HASZNOS LAKÓTÉR: ca. 146 m<sup>2</sup> • SZOBÁK: 4

VP azonosító: NL24185509 - 1031KG Amsterdam

- Áttekintés
- Az ingatlan
- Az első benyomás
- Részletes felszereltség
- Minden a helyszínről?
- További információ / adatok
- Kapcsolattartó

VP azonosító: NL24185509 - 1031KG Amsterdam

## Áttekintés

VP azonosító	NL24185509	Vételár	1.150.000 EUR
Hasznos lakótér	ca. 146 m <sup>2</sup>	Lakás	Apartment
Szobák	4		
Hálószobák	3		
FÜRDŐSZOBÁK	1		
ÉPÍTÉS ÉVE	2021		

VP azonosító: NL24185509 - 1031KG Amsterdam

## Az ingatlan



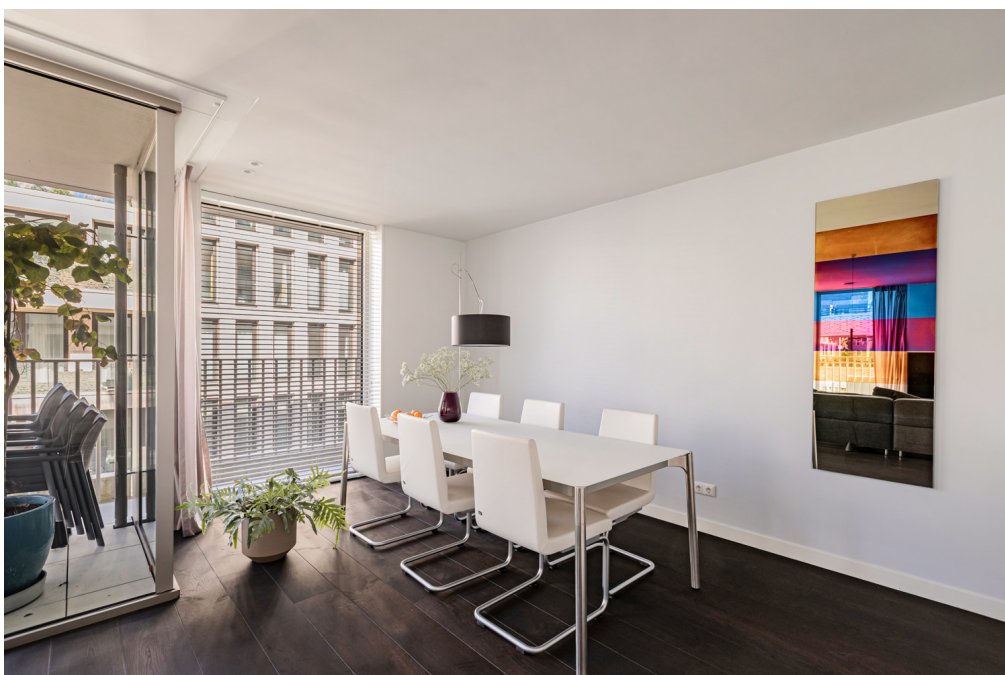
VP azonosító: NL24185509 - 1031KG Amsterdam

## Az ingatlan



VP azonosító: NL24185509 - 1031KG Amsterdam

## Az ingatlan



VP azonosító: NL24185509 - 1031KG Amsterdam

## Az ingatlan



VP azonosító: NL24185509 - 1031KG Amsterdam

## Az ingatlan





VP azonosító: NL24185509 - 1031KG Amsterdam

## Az ingatlan



VP azonosító: NL24185509 - 1031KG Amsterdam

## Az ingatlan



VP azonosító: NL24185509 - 1031KG Amsterdam

## Az ingatlan



VP azonosító: NL24185509 - 1031KG Amsterdam

## Az ingatlan



VP azonosító: NL24185509 - 1031KG Amsterdam

## Az ingatlan



VP azonosító: NL24185509 - 1031KG Amsterdam

## Az ingatlan



VP azonosító: NL24185509 - 1031KG Amsterdam

## Az ingatlan



VP azonosító: NL24185509 - 1031KG Amsterdam

## Az ingatlan

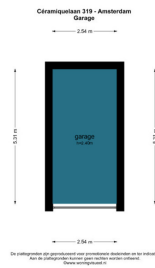






VP azonosító: NL24185509 - 1031KG Amsterdam

## Az ingatlan





**VP azonosító: NL24185509 - 1031KG Amsterdam**

## Az els? benyomás

Ceramiquelaan 319 On the third floor of a remarkable building with stunning architecture in Amsterdam Noord, "THE WING," lies this spacious CORNER apartment of 146 m<sup>2</sup>, featuring a 30 m<sup>2</sup> wraparound terrace with a view of the Schegpark, which is currently under construction. There is the option to purchase a parking space in the basement of the building, with or without a charging station. The cost for the parking space with a charging station is €75,000, and without a charging station €50,000.

**VP azonosító: NL24185509 - 1031KG Amsterdam**

## Részletes felszereltség

### Layout:

Access the corner apartment through the spectacular shared entrance. All rooms can be reached from the hallway. This is an exceptionally spacious apartment with a generous living area, a Siematic island kitchen equipped with a Bora cooktop, Quooker, and Siemens oven and microwave. From the living-dining area, you can access the terrace, which enjoys delightful afternoon and evening sun.

The master bedroom features a luxurious walk-in closet, and from this room, you can step directly onto the balcony with unobstructed views of the Shell Tower and the 'Schegpark'. The bathroom is highly luxurious, finished with high-quality fixtures and tiling, and includes a bathtub, walk-in shower, double sink, and toilet. There is also a separate luxurious toilet in the hallway. Finally, there is a storage area for the washing machine, dryer, and technical installations.

The building, The Wing, has a striking fold in its structure. The architect chose this design for a reason; it was inspired by the location by Schegpark and views of the IJ. The aim was to create as much view as possible. Bringing the outside in was the idea of Paul Stavert from Powerhouse Company. The horizontal lines emphasize the grace of the balconies, which playfully alternate between straight and rounded corners. Additionally, the façade steps back at certain points, making some balconies particularly deep. The Wing has an Italian flair, due to the use of natural stone in the façade.

**VP azonosító: NL24185509 - 1031KG Amsterdam**

## Minden a helyszínr?!

**LOCATION** The Wing is situated in a unique location, between the dynamic Schegpark and the green, central neighborhood square. The shape of the building, resembling a wing, creates a unique dynamic between nature and architecture. The general garden of The Wing is located by the Schegpark, allowing every resident to enjoy this unique spot with views of the EYE Film Museum and the A'DAM Tower. The garden is beautifully designed by landscape architect Paul Plambeck from Buro Sant and Co, featuring a large characteristic tree, various grasses and flowering plants, a pathway, and a custom concrete seating area.

**VP azonosító: NL24185509 - 1031KG Amsterdam**

## További információ / adatok

FEATURES - Living area of 146 m<sup>2</sup>; - 3 bedrooms; - Luxurious Siematic kitchen; - High-quality sanitary ware and tiling; - Many windows; - The entire apartment is equipped with underfloor heating and cooling; - Option to purchase parking spaces with/without charging station; (with €75,000, without €50,000); - Internal storage room; - VvE service costs € 301,72, - per month; - Leasehold perpetually bought off;

VP azonosító: NL24185509 - 1031KG Amsterdam

## Kapcsolattartó

További információért forduljon a kapcsolattartójához:

Joan Dik, Marie Christine Lodewijk & Elisabeth van Zijverden

---

De Lairesestraat 51 Amszterdam  
E-Mail: [info@von-poll.nl](mailto:info@von-poll.nl)

*To Disclaimer of von Poll Immobilien GmbH*

---

[www.von-poll.com](http://www.von-poll.com)