

Kifissia

Oranelle

???????? ??: 912338

???? ??: 3.800.000 EUR • ??: 1.569 m²

??????? ?????????: 912338 - 14562 Kifissia

● ?? ??? ??????

● ?? ????????

● ??? ?????? ??????????

● ????????????? ??????????????

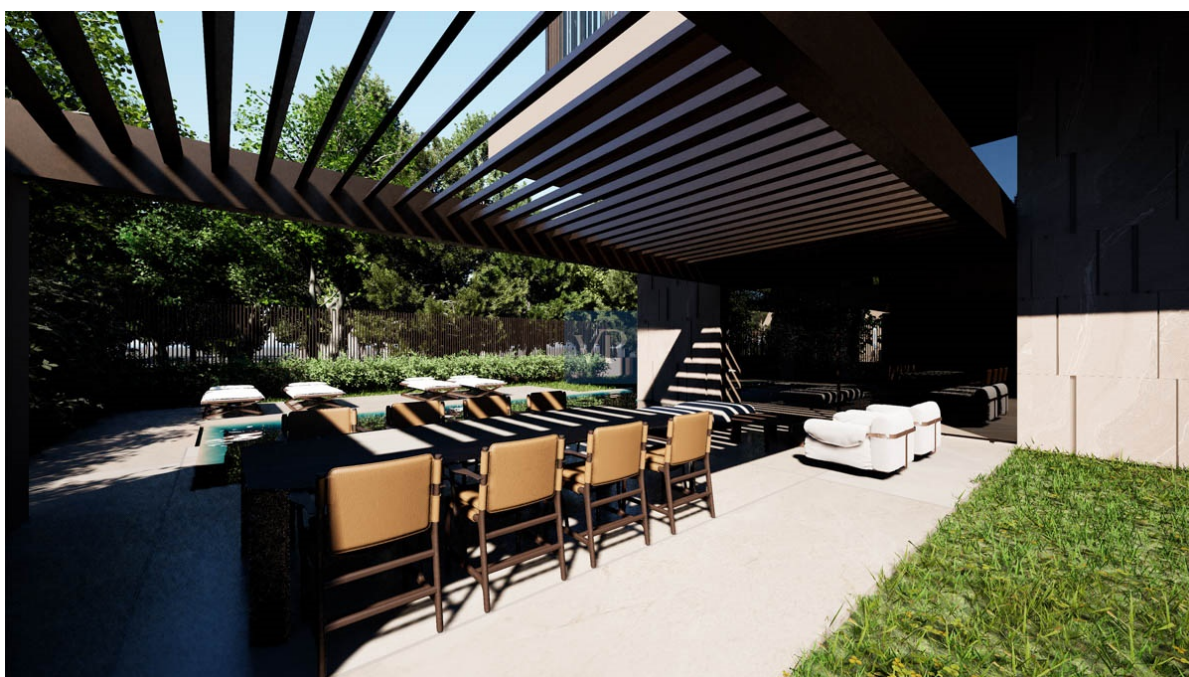
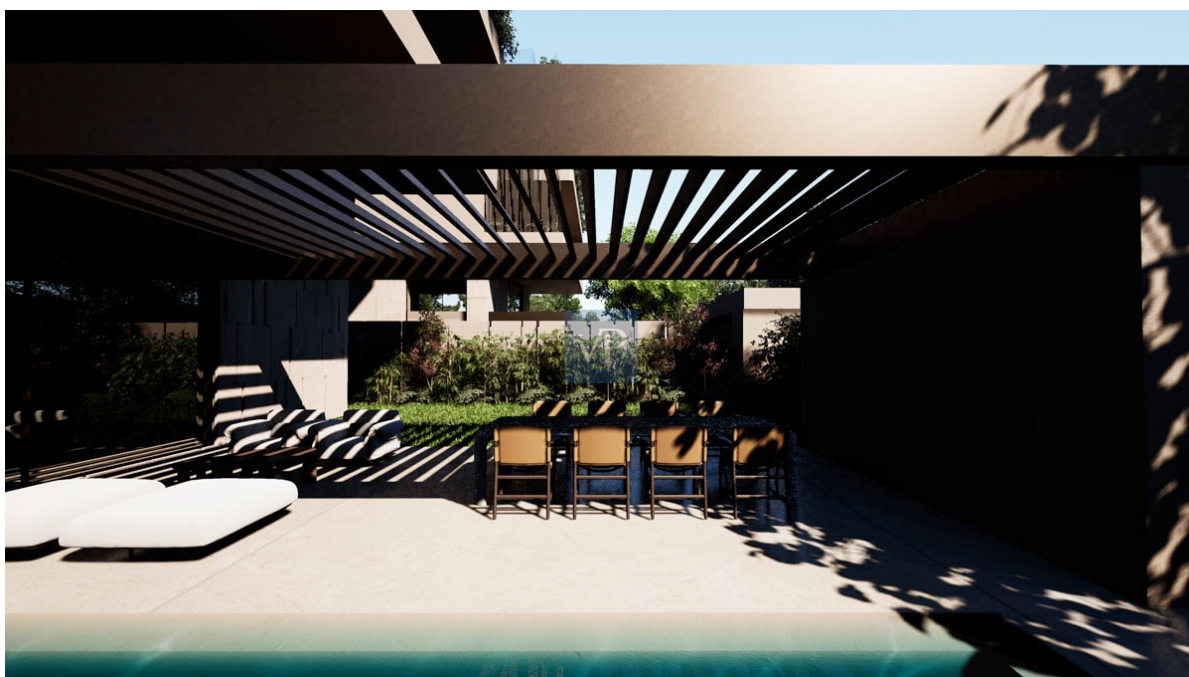
??????? ?????????: 912338 - 14562 Kifissia

?? ??? ??????

??????? ?????????	912338	???? ?????	3.800.000 EUR
?????????? ??	3	????????	
????????		???????? ?????	ca. 292 m²
????????	3		

???????? ?????: 912338 - 14562 Kifissia

?? ???????



???????? ?????????: 912338 - 14562 Kifissia

?? ????????



???????? ??????????: 912338 - 14562 Kifissia

?? ?????????



???????? ?????????: 912338 - 14562 Kifissia

?? ?????????



???????? ??????????: 912338 - 14562 Kifissia

?? ?????????



???????? ?????????: 912338 - 14562 Kifissia

?? ?????????



??????? ???????: 912338 - 14562 Kifissia

??? ?????? ?????????

Perched in the most prestigious corner of Kefalari in Kifisia, Oranelle is an architectural masterpiece that redefines penthouse living. Designed with impeccable precision and built to the highest standards, this luxurious residence seamlessly blends modern elegance with cosmopolitan influences, offering a lifestyle of unparalleled sophistication.

Spanning an impressive 292.67 sq.m. across two levels, Oranelle exudes grandeur from the moment you step inside. On the second floor, an elegant entrance hall leads to a sunlit living room and a formal dining area, both thoughtfully crafted for hosting and relaxation. The modern kitchen is a space where form meets function, inspiring culinary creativity. Two spacious bedrooms, each with its own ensuite bathroom, provide comfort and privacy, while a guest WC adds a touch of practicality. An internal staircase and private elevator ascend to the pinnacle of the property—the attic.

The attic floor, a luxurious sanctuary, features an additional bedroom with an ensuite bathroom, a cozy kitchen, and an intimate living room. Step outside to discover the crown jewel of this residence: a breathtaking 120.76 sq.m. terrace. Here, a private 29.5 sq.m. swimming pool offers a serene escape, while the expansive space invites you to enjoy the spectacular views and entertain under the open sky.

Beyond the living spaces, Oranelle offers exclusive amenities in the basement of Building B. A versatile 29.30 sq.m. studio provides endless possibilities, whether as a guest suite, office, or personal retreat. A 12.50 sq.m. storage room ensures impeccable organization, while two dedicated parking spaces add to your convenience.

Known for its stately mansions, tree-lined streets, and vibrant lifestyle, Kefalari is a harmonious blend of tranquility and sophistication. The area boasts boutique shopping, gourmet dining, and charming cafés, offering everything you need to enjoy a life of luxury and leisure.

Oranelle is more than a home—it's an invitation to elevate your lifestyle, embracing the elegance, comfort, and prestige that only Kefalari in Kifisia can offer.

??????? ?????????: 912338 - 14562 Kifissia

????????????? ???????????????

??? ?????????????? ?????????????, ?????????????? ?? ??? ?????????? ?????????????? ???:

VON POLL REAL ESTATE Athens

Kifisias Avenue 227, 14561 Kifisia

Tel.: +30 21 06 14 87 77

E-Mail: salesgreece@von-poll.com

???? ?????????? ???????? ??? von Poll Immobilien GmbH

www.von-poll.com