

Torri del Benaco – Gardasee

## Villa divided into 4 apartments with basement, parking spaces and swimming pool

Property ID: IT252941958



[www.von-poll.it](http://www.von-poll.it)

LAND AREA: 950 m<sup>2</sup>

Property ID: IT252941958 - 37010 Torri del Benaco – Gardasee

- At a glance
- The property
- Energy Data
- Floor plans
- A first impression
- Contact partner

Property ID: IT252941958 - 37010 Torri del Benaco – Gardasee

## At a glance

Property ID	IT252941958	Purchase Price	On request
		Commission	subject to commission
		Total Space	ca. 320 m <sup>2</sup>

Property ID: IT252941958 - 37010 Torri del Benaco – Gardasee

## Energy Data

Power Source	Gas
Energy information	At the time of preparing the document, no energy certificate was available.



Property ID: IT252941958 - 37010 Torri del Benaco – Gardasee

## The property





Property ID: IT252941958 - 37010 Torri del Benaco – Gardasee

## The property



Property ID: IT252941958 - 37010 Torri del Benaco – Gardasee

## The property





Property ID: IT252941958 - 37010 Torri del Benaco – Gardasee

## The property





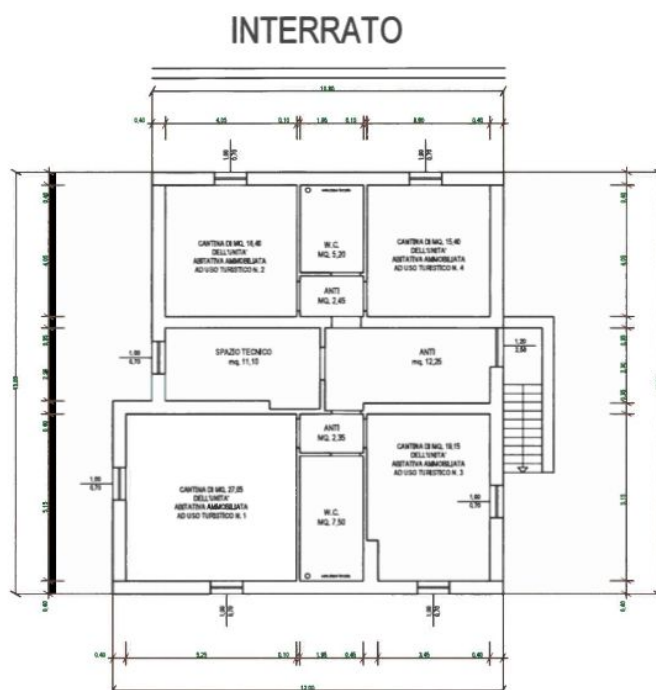
Property ID: IT252941958 - 37010 Torri del Benaco – Gardasee

## The property

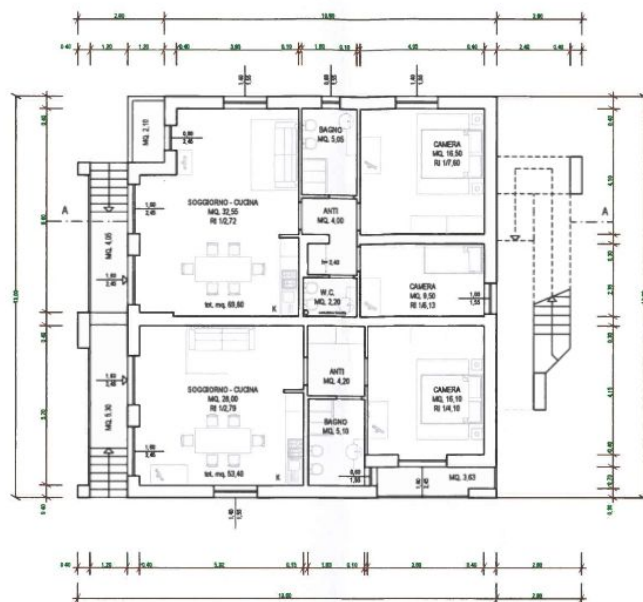


Property ID: IT252941958 - 37010 Torri del Benaco – Gardasee

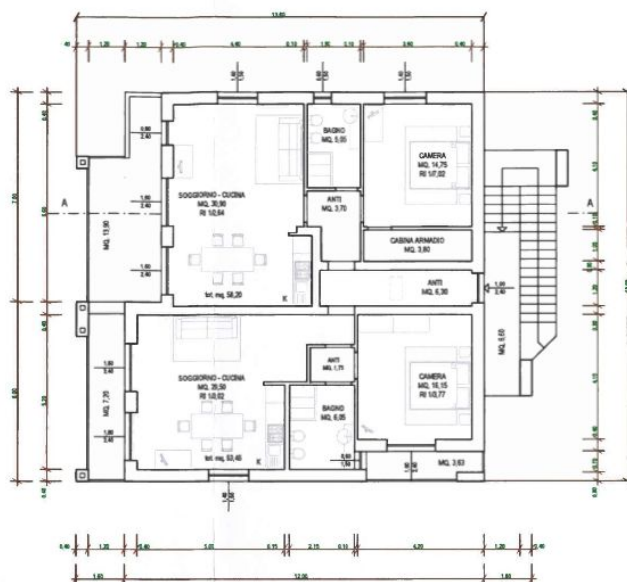
## Floor plans



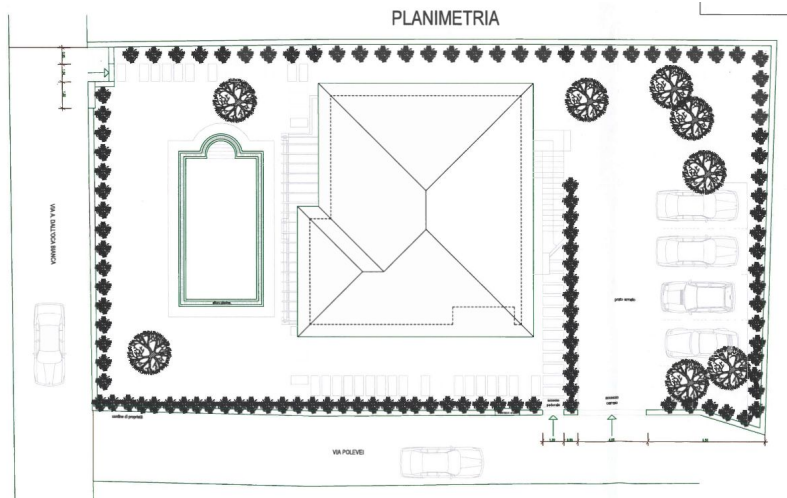
## TERRA



## PRIMO







This floor plan is not to scale. The documents were given to us by the client. For this reason, we cannot guarantee the accuracy of the information.

**Property ID: IT252941958 - 37010 Torri del Benaco – Gardasee**

## A first impression

A short walk from the center of Torri del Benaco and immersed in a reserved and quiet residential context, we offer for sale a refined accommodation structure consisting of four independent apartments, ideal both as an income investment and as a multi-family solution or for tourist-receptive activity.

The property is developed on a total commercial area of about 320 square meters, divided into four residential units of about 70 square meters each, all equipped with independent entrance, private parking space and cellar of pertinence, ensuring comfort and functionality for each apartment.

The apartments are harmoniously distributed and enjoy a pleasant exposure, with bright, well-divided spaces that can be easily adapted to different living or accommodation needs.

At the common service of the units, there is a large garden of about 950 square meters, well-kept and rich in Mediterranean vegetation, as well as a beautiful condominium swimming pool, ideal for moments of relaxation and conviviality in a private and cozy atmosphere.

This property represents a rare investment opportunity in Torri del Benaco, one of the most popular locations on Lake Garda, perfect for those looking for a prestigious property with high income potential and versatile architectural features.

For further details, documentation or to arrange a confidential visit, we remain at your complete disposal.

Property ID: IT252941958 - 37010 Torri del Benaco – Gardasee

## Contact partner

For further information, please contact your contact person:

Christian Weissensteiner

---

Largo Dante Alighieri, n.3, 25087 Salò

Tel.: +39 0365 690596

E-Mail: [salo@von-poll.com](mailto:salo@von-poll.com)

*To the Disclaimer of von Poll Immobilien GmbH*

---

[www.von-poll.com](http://www.von-poll.com)