

Torri Del Benaco – Gardasee

# Hotel del Porto - Torri del Benaco

Property ID: IT252941956



[www.von-poll.it](http://www.von-poll.it)

**PURCHASE PRICE: 8.000.000 EUR • LIVING SPACE: ca. 2.700 m<sup>2</sup>**

Property ID: IT252941956 - 37010 Torri Del Benaco – Gardasee

- At a glance
- The property
- Floor plans
- A first impression
- Contact partner

Property ID: IT252941956 - 37010 Torri Del Benaco – Gardasee

## At a glance

Property ID	IT252941956	Purchase Price	8.000.000 EUR
Living Space	ca. 2.700 m <sup>2</sup>	Commission	subject to commission
		Total Space	ca. 3.000 m <sup>2</sup>



Property ID: IT252941956 - 37010 Torri Del Benaco – Gardasee

## The property





Property ID: IT252941956 - 37010 Torri Del Benaco – Gardasee

## The property



Property ID: IT252941956 - 37010 Torri Del Benaco – Gardasee

## The property





Property ID: IT252941956 - 37010 Torri Del Benaco – Gardasee

## The property





Property ID: IT252941956 - 37010 Torri Del Benaco – Gardasee

## The property



Property ID: IT252941956 - 37010 Torri Del Benaco – Gardasee

## The property





Property ID: IT252941956 - 37010 Torri Del Benaco – Gardasee

## The property





Property ID: IT252941956 - 37010 Torri Del Benaco – Gardasee

## The property



Property ID: IT252941956 - 37010 Torri Del Benaco – Gardasee

## The property



Property ID: IT252941956 - 37010 Torri Del Benaco – Gardasee

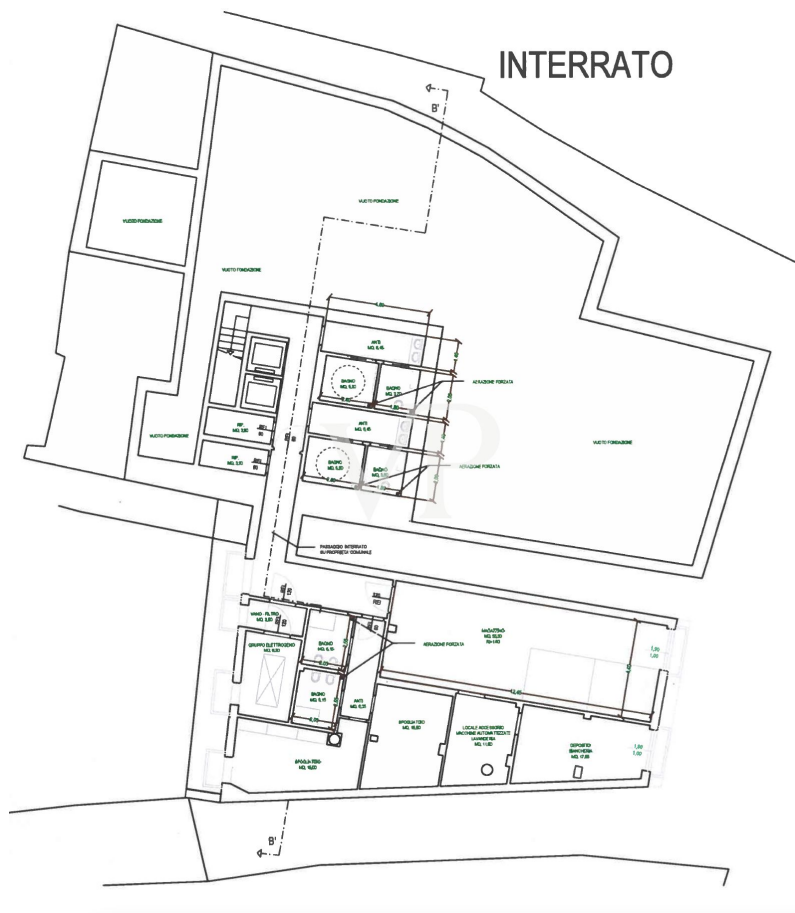
## The property

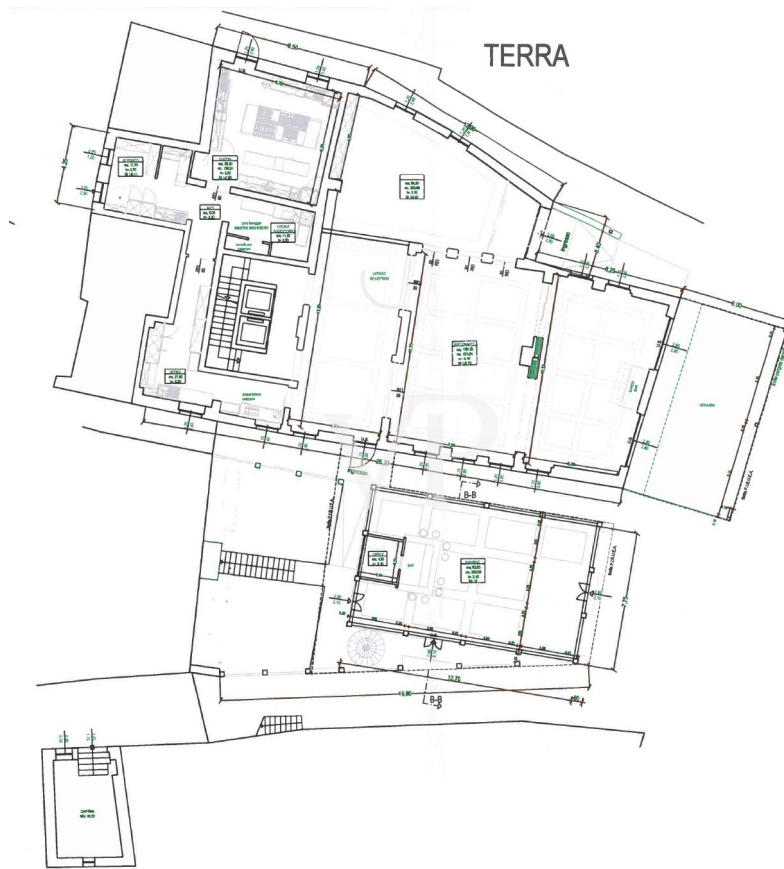




Property ID: IT252941956 - 37010 Torri Del Benaco – Gardasee

## Floor plans









## SECONDO

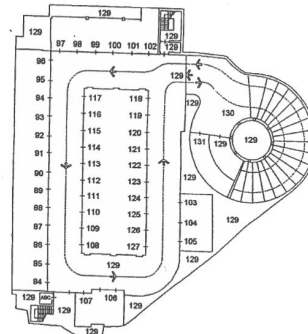
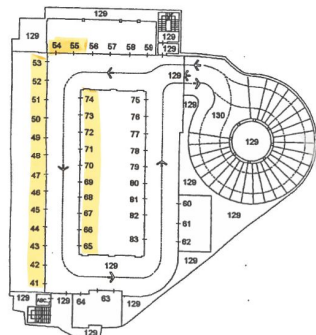






PIANO INTERRATO -2

PIANO INTERRATO -3



M.P. & S.P. s.p.a.  
10134/12 - 10134/2  
10134/3 - 10134/4  
10134/5 - 10134/6  
10134/7 - 10134/8  
10134/9 - 10134/10  
10134/11 - 10134/12  
10134/13 - 10134/14  
10134/15 - 10134/16  
10134/17 - 10134/18  
10134/19 - 10134/20  
10134/21 - 10134/22  
10134/23 - 10134/24  
10134/25 - 10134/26  
10134/27 - 10134/28  
10134/29 - 10134/30  
10134/31 - 10134/32  
10134/33 - 10134/34  
10134/35 - 10134/36  
10134/37 - 10134/38  
10134/39 - 10134/40  
10134/41 - 10134/42  
10134/43 - 10134/44  
10134/45 - 10134/46  
10134/47 - 10134/48  
10134/49 - 10134/50  
10134/51 - 10134/52  
10134/53 - 10134/54  
10134/55 - 10134/56  
10134/57 - 10134/58  
10134/59 - 10134/60  
10134/61 - 10134/62  
10134/63 - 10134/64  
10134/65 - 10134/66  
10134/67 - 10134/68  
10134/69 - 10134/70  
10134/71 - 10134/72  
10134/73 - 10134/74  
10134/75 - 10134/76  
10134/77 - 10134/78  
10134/79 - 10134/80  
10134/81 - 10134/82  
10134/83 - 10134/84  
10134/85 - 10134/86  
10134/87 - 10134/88  
10134/89 - 10134/90  
10134/91 - 10134/92  
10134/93 - 10134/94  
10134/95 - 10134/96  
10134/97 - 10134/98  
10134/99 - 10134/100  
10134/101 - 10134/102  
10134/103 - 10134/104  
10134/105 - 10134/106  
10134/107 - 10134/108  
10134/109 - 10134/110  
10134/111 - 10134/112  
10134/113 - 10134/114  
10134/115 - 10134/116  
10134/117 - 10134/118  
10134/119 - 10134/120  
10134/121 - 10134/122  
10134/123 - 10134/124  
10134/125 - 10134/126  
10134/127 - 10134/128  
10134/129 - 10134/130  
10134/131 - 10134/132  
10134/133 - 10134/134  
10134/135 - 10134/136  
10134/137 - 10134/138  
10134/139 - 10134/140  
10134/141 - 10134/142  
10134/143 - 10134/144  
10134/145 - 10134/146  
10134/147 - 10134/148  
10134/149 - 10134/150  
10134/151 - 10134/152  
10134/153 - 10134/154  
10134/155 - 10134/156  
10134/157 - 10134/158  
10134/159 - 10134/160  
10134/161 - 10134/162  
10134/163 - 10134/164  
10134/165 - 10134/166  
10134/167 - 10134/168  
10134/169 - 10134/170  
10134/171 - 10134/172  
10134/173 - 10134/174  
10134/175 - 10134/176  
10134/177 - 10134/178  
10134/179 - 10134/180  
10134/181 - 10134/182  
10134/183 - 10134/184  
10134/185 - 10134/186  
10134/187 - 10134/188  
10134/189 - 10134/190  
10134/191 - 10134/192  
10134/193 - 10134/194  
10134/195 - 10134/196  
10134/197 - 10134/198  
10134/199 - 10134/200

This floor plan is not to scale. The documents were given to us by the client. For this reason, we cannot guarantee the accuracy of the information.



Property ID: IT252941956 - 37010 Torri Del Benaco – Gardasee

## A first impression

Prestige Lakefront Hotel in Torri del Benaco - Unique Investment Opportunity In an exclusive location on the lakefront of Torri del Benaco, we offer for sale the Hotel del Porto, a charming accommodation recently renovated (2010), rented with excellent guaranteed income. The hotel has 29 elegantly furnished rooms, and is complete with an in-house restaurant, wine bar, and 100-square-meter bar, offering a complete and upscale experience to guests in one of the most renowned locations on Lake Garda. The property includes the 2,700-square-meter hotel, a 60-square-meter covered veranda, a large 300-square-meter basement, currently used for technical and service spaces, and an underground parking garage with 25 parking spaces, a valuable feature in a traffic-restricted area with high tourist footfall. A distinctive element of the offer is the private pier with 80 sqm restaurant for exclusive use, located directly on the lake, which further enhances the uniqueness and prestige of the property. To complete this extraordinary real estate proposal, also included is a wine shop located in Vicolo Poliziano, a few steps from the main structure, perfect for tastings and events, and also an integral part of the property for sale. The entire complex is currently leased, with an existing contract and excellent profitability, making it an ideal investment for hotel operators or investors looking for an exclusive income-producing asset in one of the most desirable destinations on Lake Garda. For more information and to receive full documentation, please contact us.

Property ID: IT252941956 - 37010 Torri Del Benaco – Gardasee

## Contact partner

For further information, please contact your contact person:

Christian Weissensteiner

---

Largo Dante Alighieri, n.3 Salò

E-Mail: [salo@von-poll.com](mailto:salo@von-poll.com)

*To Disclaimer of von Poll Immobilien GmbH*

---

[www.von-poll.com](http://www.von-poll.com)